

HOW TO PLAY JAZZ PIANO

Pam Wedgwood



For online audio tracks
scan the QR code or go to
fabermusic.com/content/audio

FABER *ff* MUSIC

Session 5

Starting to improvise

One of the things I like about jazz is that I don't know what's going to happen next.

Bix Beiderbecke

One of the note patterns that is most commonly used in music is the pentatonic scale – a group of 5 notes.

Pam says

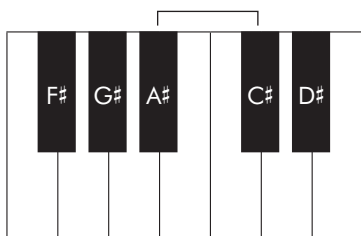
“ Studying the pentatonic scale will give you a great starting point for your improvisations. All the notes lie well under the fingers and generally sound good together. ”

Major pentatonic scales

The major pentatonic scale uses notes 1, 2, 3, 5 and 6 of a major scale and has a very natural feel to it. It's commonly used in jazz and popular music – in fact, there are a huge number of pop songs based entirely on the major pentatonic scale!

Starting to improvise on the black notes

Play a pentatonic scale starting on F# – this uses all the black notes and is ideal to improvise with. Notice that the interval from note 3 to 5 is a minor 3rd (one semitone smaller than a major 3rd).



Try improvising over these two backing tracks – any black note will fit.

Here's how to get started:

- Play up and down the black-note scale in time with the backing track.
- Then try skipping some notes of the scale.
- Finally try adding different rhythms, using only a few notes of the scale.

23 Black-note boogie

24 Black magic

Listening post: Well-known songs that use the pentatonic scale

Auld Lang Syne Trad.

Stairway to Heaven Led Zeppelin

Swing Low, Sweet Chariot Trad.

Old Macdonald Had a Farm Trad.

Just the Two of Us Bill Withers

Summertime George Gershwin

Chameleon Herbie Hancock

Perfect pentatonic practice

Now that you're familiar with how the major pentatonic scale sounds, let's try it in different keys. Have a go at playing these four scales over each backing track rhythm.

- Try hands separately at first, then hands together.
- Try skipping some notes of the scale or mixing up the note order to create your own melodies.
- Try playing the scale / melody using different rhythms.
- Finally, work out how to play a pentatonic scale starting on D and E flat.

Listening post

The power of the pentatonic scale Bobby McFerrin

25 C major pentatonic

Musical notation for the C major pentatonic scale in 4/4 time. The scale is written in a grand staff (treble and bass clefs). The treble clef part starts on middle C (C4) and the bass clef part starts on C3. The scale consists of five notes: C, D, E, G, A. The notation shows the scale ascending and then descending, with a final whole note chord. Fingering is indicated: 1 for C and 4 for G in the treble clef, and 5 for C and 2 for G in the bass clef.

26 G major pentatonic

Musical notation for the G major pentatonic scale in 4/4 time. The scale is written in a grand staff (treble and bass clefs). The treble clef part starts on G4 and the bass clef part starts on G2. The scale consists of five notes: G, A, B, D, E. The notation shows the scale ascending and then descending, with a final whole note chord. Fingering is indicated: 1 for G and 4 for D in the treble clef, and 5 for G and 2 for D in the bass clef.

27 F major pentatonic

Musical notation for the F major pentatonic scale in 4/4 time. The scale is written in a grand staff (treble and bass clefs). The treble clef part starts on F4 and the bass clef part starts on F2. The scale consists of five notes: F, G, A, C, D. The notation shows the scale ascending and then descending, with a final whole note chord. Fingering is indicated: 1 for F and 4 for C in the treble clef, and 5 for F and 2 for C in the bass clef.

28 B \flat major pentatonic

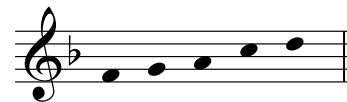
Musical notation for the B \flat major pentatonic scale in 4/4 time. The scale is written in a grand staff (treble and bass clefs). The treble clef part starts on B \flat 4 and the bass clef part starts on B \flat 2. The scale consists of five notes: B \flat , C, D, F, G. The notation shows the scale ascending and then descending, with a final whole note chord. Fingering is indicated: 1 for B \flat and 4 for F in the treble clef, and 5 for B \flat and 2 for F in the bass clef.

Filling in the gaps

Improvise over the left-hand chords, using notes from the pentatonic scale given.
Start off by improvising over the backing track given.

29 Pentatonic magic 1

With sparkle $\text{♩}=\text{♩}^3$

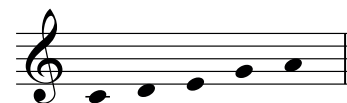


5/4 *mf*

5

30 Pentatonic magic 2

Dreamily (straight)



3/4 *p*

7

12

Improvise pentatonic responses in the right and then left hand.
Can you remember the scale each time?

Spice it up!

Musical notation for 'Spice it up!' in 4/4 time, key of D major. The right hand starts with a treble clef, a key signature of one sharp (F#), and a 4/4 time signature. The first two measures contain a melody: a quarter note D4, an eighth note E4, a quarter note F#4, a quarter note G4, a quarter note A4, a quarter note B4, a quarter note C5, a quarter note B4, a quarter note A4, a quarter note G4, a quarter note F#4, and a quarter note E4. A triplet of eighth notes (F#4, G4, A4) is indicated above the first three notes. The melody ends with a fermata. The left hand has a bass clef and a key signature of one sharp. The first two measures contain a bass line: a quarter note D3, a quarter note E3, a quarter note F#3, a quarter note G3, a quarter note A3, a quarter note B3, a quarter note C4, a quarter note B3, a quarter note A3, a quarter note G3, a quarter note F#3, and a quarter note E3. The last two measures of the system are empty staves with a rectangular box for improvisation.

5

Musical notation for the continuation of 'Spice it up!'. The right hand has a treble clef and a key signature of one sharp. The first two measures are empty staves. The left hand has a bass clef and a key signature of one sharp. The first two measures contain a bass line: a quarter note D3, a quarter note E3, a quarter note F#3, a quarter note G3, a quarter note A3, a quarter note B3, a quarter note C4, a quarter note B3, a quarter note A3, a quarter note G3, a quarter note F#3, and a quarter note E3. The last two measures of the system are empty staves with a rectangular box for improvisation.

Gentle waltz

Musical notation for 'Gentle waltz' in 3/4 time, key of D major. The right hand has a treble clef, a key signature of one sharp, and a 3/4 time signature. The first two measures contain a melody: a quarter note D4, a quarter note E4, a quarter note F#4, a quarter note G4, a quarter note A4, a quarter note B4, a quarter note C5, a quarter note B4, a quarter note A4, a quarter note G4, a quarter note F#4, and a quarter note E4. The left hand has a bass clef and a key signature of one sharp. The first two measures are empty staves. The last two measures of the system are empty staves with a rectangular box for improvisation.

5

Musical notation for the continuation of 'Gentle waltz'. The right hand has a treble clef and a key signature of one sharp. The first two measures are empty staves. The left hand has a bass clef and a key signature of one sharp. The first two measures contain a bass line: a quarter note D3, a quarter note E3, a quarter note F#3, a quarter note G3, a quarter note A3, a quarter note B3, a quarter note C4, a quarter note B3, a quarter note A3, a quarter note G3, a quarter note F#3, and a quarter note E3. The last two measures of the system are empty staves with a rectangular box for improvisation.

Spinning

Musical notation for 'Spinning' in 6/8 time, key of D minor. The right hand has a treble clef, a key signature of two flats (Bb, Eb), and a 6/8 time signature. The first two measures contain a melody: a quarter note D4, an eighth note E4, a quarter note F#4, an eighth note G4, a quarter note A4, an eighth note B4, a quarter note C5, an eighth note B4, a quarter note A4, an eighth note G4, a quarter note F#4, and a quarter note E4. The left hand has a bass clef and a key signature of two flats. The first two measures are empty staves. The last two measures of the system are empty staves with a rectangular box for improvisation.

5

Musical notation for the continuation of 'Spinning'. The right hand has a treble clef and a key signature of two flats. The first two measures are empty staves. The left hand has a bass clef and a key signature of two flats. The first two measures contain a bass line: a quarter note D3, an eighth note E3, a quarter note F#3, an eighth note G3, a quarter note A3, an eighth note B3, a quarter note C4, an eighth note B3, a quarter note A3, an eighth note G3, a quarter note F#3, and a quarter note E3. The last two measures of the system are empty staves with a rectangular box for improvisation.

Minor pentatonic scales

Here are some minor pentatonic scales. Use them to improvise over the backing tracks as you did for the major pentatonics.

25 A minor pentatonic

Musical notation for the A minor pentatonic scale in 4/4 time. The scale is written in two staves (treble and bass clef). The treble clef staff starts with a C4 note, and the bass clef staff starts with an A3 note. The scale consists of six notes: A, C, D, E, F, and A. The first two notes are marked with '1' and '2' above them. The scale is played in a descending pattern over six measures, ending with a whole note A in the treble clef and a whole note A in the bass clef.

26 E minor pentatonic

Musical notation for the E minor pentatonic scale in 4/4 time. The scale is written in two staves (treble and bass clef). The treble clef staff starts with an E4 note, and the bass clef staff starts with an E3 note. The scale consists of six notes: E, G, A, B, C, and E. The first two notes are marked with '1' and '2' above them. The scale is played in a descending pattern over six measures, ending with a whole note E in the treble clef and a whole note E in the bass clef.

27 D minor pentatonic

Musical notation for the D minor pentatonic scale in 4/4 time. The scale is written in two staves (treble and bass clef). The treble clef staff starts with a D4 note, and the bass clef staff starts with a D3 note. The scale consists of six notes: D, F, G, A, B, and D. The first two notes are marked with '1' and '2' above them. The scale is played in a descending pattern over six measures, ending with a whole note D in the treble clef and a whole note D in the bass clef.

28 G minor pentatonic

Musical notation for the G minor pentatonic scale in 4/4 time. The scale is written in two staves (treble and bass clef). The treble clef staff starts with a G4 note, and the bass clef staff starts with a G3 note. The scale consists of six notes: G, B, C, D, E, and G. The first two notes are marked with '1' and '2' above them. The scale is played in a descending pattern over six measures, ending with a whole note G in the treble clef and a whole note G in the bass clef.

Improvising with minor pentatonics

Improvise in the boxed bars: try it using the audio tracks first.

31 Skinny-rib swing

Musical score for "Skinny-rib swing" in 4/4 time. The piece starts with a piano introduction marked *mf*. The main melody is in the treble clef, and the bass line is in the bass clef. The score includes a first ending (1.) and a second ending (2.) marked *ff*. A boxed area indicates the improvisation section in the first ending.

32 Summer's end

Musical score for "Summer's end" in 3/4 time. The piece starts with a piano introduction marked *mp*. The main melody is in the treble clef, and the bass line is in the bass clef. The score includes a first ending (1.) and a second ending (2.). A boxed area indicates the improvisation section in the first ending.

33 Diamond cut

Musical score for "Diamond cut" in 4/4 time. The piece starts with a piano introduction marked *mf*. The main melody is in the treble clef, and the bass line is in the bass clef. The score includes a first ending (1.) and a second ending (2.). A boxed area indicates the improvisation section in the first ending.