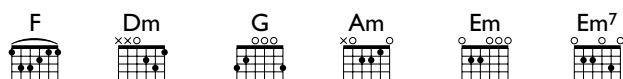


# Losing My Religion



The intro may look complicated here but it's actually the same rhythm as the mandolin part on the backing track. Keep this in your head and it should come naturally.

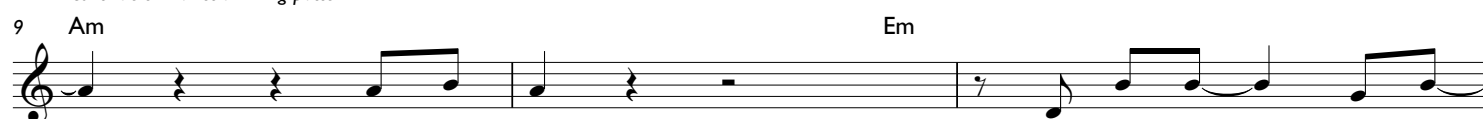
count in: 2 bars

$\text{♩} = 126$   
F



1. Oh\_\_\_\_\_ life\_

continue similar strumming pattern



\_\_\_\_\_ is big - ger, it's big - ger\_\_\_\_\_ than you,\_\_\_\_  
(3.) - per, of ev - 'ry wak - ing hour,\_\_\_\_\_ I'm



\_\_\_\_\_ and you\_\_\_\_\_ are not\_\_\_\_\_ me. The lengths that I will go\_\_\_\_  
choos - ing my con - fes - sions, try - ing to keep\_



\_\_\_\_\_ to, the dis - tance in\_\_\_\_\_ your eyes.\_\_\_\_  
\_\_\_\_\_ an eye\_\_\_\_\_ on you.\_\_\_\_\_ Like a hurt,\_\_\_\_\_ lost and blind - ed fool,\_\_\_\_\_



\_\_\_\_\_ fool. Oh no I've said too\_\_\_\_\_ much,\_\_\_\_\_



\_\_\_\_\_ I set it\_\_\_\_\_ up.\_\_\_\_\_ 2. That's me in the cor -  
4. Con - si - der this,



- ner that's me in the spot - - light  
\_\_\_\_\_ con - si - der this,\_\_\_\_\_ the hint of the cen - tu - ry.\_\_\_\_\_

# Five-chord Workout No.2

count in: 1 bar  
♩ = 120

Am Em D C G

Am Em D C G

5 C G Am D

9 Am Em Am D G

# Take It Easy

count in: 2 bars  
♩ = 140

G C\* Dsus<sup>4</sup> D C

(strumming pattern) cont. sim.

1. Well, I'm a -

run - nin' down the road tryin' to loos - en my load, I got se - ven wo - men on my  
stand - in' on a cor - ner in Win - slow, A - ri - zo - na, such a fine sight to see:  
run - nin' down the road tryin' to loo - sen my load, got a world of trou - ble on my

10 C G D

mind. Four they wan - na own me, two they wan - na stone me, one  
it's a girl, my Lord, in a flat - bed Ford slow - in'  
mind. Look - in' for a lo - ver who won't blow my co - ver, she's

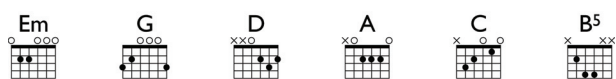
13 C G Em

says she's a friend of mine. Take it ea - - -  
down to take a look at me. Come on ba - - -  
so hard to find. Take it ea - - -

16 C G

- sy, take it ea - - - sy. Don't let the  
- by, don't say may - - - be. I got - ta  
- sy, take it ea - - - sy. Don't let the

# Boulevard Of Broken Dreams



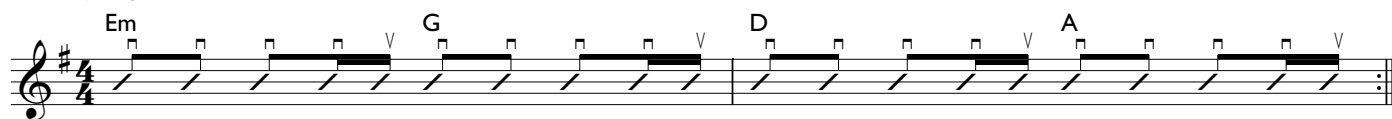
Capo 1st fret

**top  
tip**

This song requires a capo at the first fret.

count in: 1 bar

♩ = 84



continue strumming pattern

