

VIOLIN

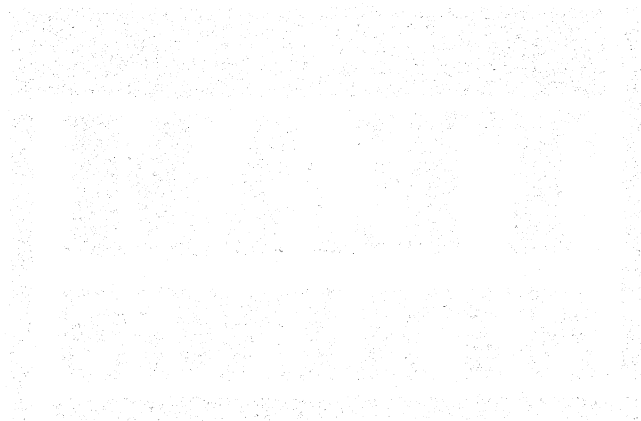
**TEAM
STRINGS**

SUPPLEMENT



**International
MUSIC
Publications**

International Music Publications Limited
Griffin House 161 Hammersmith Road London W6 8BS England



1914

1914

1914

German tune

Ensemble part for TEAM WOODWIND version in F.

Traditional



Lullaby

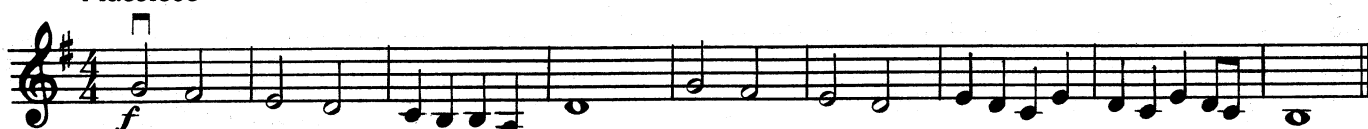
Ensemble part for TEAM WOODWIND version in F.



Regal fanfare

Ensemble part for TEAM WOODWIND version in G.

Maestoso



When I first came to this land

Ensemble part for TEAM WOODWIND version in F.

Fast and furious

Traditional



Blowin' in the wind

Ensemble part for TEAM WOODWIND version in C.

Words and music
by BOB DYLAN

Steadily



2nd finger back

German tuneEnsemble part for TEAM BRASS/WOODWIND version in B \flat .

Traditional

**Lullaby**Ensemble part for TEAM BRASS/WOODWIND version in B \flat .**Regal fanfare**Ensemble part for TEAM BRASS/WOODWIND version in B \flat .

Maestoso



20

When I first came to this land

Ensemble part for TEAM BRASS/WOODWIND version in B \flat .

Fast and furious

Traditional



21

Blowin' in the wind

Ensemble part for TEAM BRASS/WOODWIND
version in B \flat .

Words and music
by BOB DYLAN

Steadily



37

Au clair de la lune

Ensemble part for TEAM BRASS/WOODWIND version in F.

French traditional

Simply

Fine

D.C. al Fine



Little donkey

Ensemble part for TEAM BRASS/WOODWIND
version in B \flat .

Words and Music by
ERIC BOSWELL

Andante

mf

Fine

f *mf* *f* *mf*

Γ D.C. al Fine

The musical score for 'Little donkey' is written for a single staff in 4/4 time, key of B-flat major. It begins with a tempo marking of 'Andante' and a dynamic of 'mf'. The melody consists of a series of quarter notes: B-flat, A, G, F, E, D, C, B-flat. The piece ends with a 'Fine' marking. A second staff below shows a bass line with dynamics 'f', 'mf', 'f', and 'mf', and a 'D.C. al Fine' instruction.

Tijuana brass

Ensemble part for TEAM BRASS/WOODWIND version in E \flat .

Brightly

f

1 2

1 D.C. al Fine 2 Fine

The musical score for 'Tijuana brass' is written for a single staff in 4/4 time, key of E-flat major. It begins with a tempo marking of 'Brightly' and a dynamic of 'f'. The melody features eighth and sixteenth notes. There are two first endings: the first leads back to the beginning, and the second leads to the 'Fine'. A 'D.C. al Fine' instruction is present.

I saw three ships

Ensemble part for TEAM BRASS/WOODWIND version in E \flat .

Traditional

Happily

pizz.

mf

The musical score for 'I saw three ships' is written for a single staff in 6/8 time, key of E-flat major. It begins with a tempo marking of 'Happily' and a dynamic of 'mf'. The melody is a series of eighth notes. A 'pizz.' (pizzicato) marking is present.

Michael row the boat ashore

Ensemble part for TEAM BRASS/WOODWIND version in B \flat .

Spiritual

Moderately

The musical score for 'Michael row the boat ashore' is written for a single staff in 4/4 time, key of B-flat major. It begins with a tempo marking of 'Moderately'. The melody consists of quarter notes: B-flat, A, G, F, E, D, C, B-flat.

