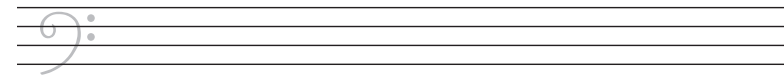
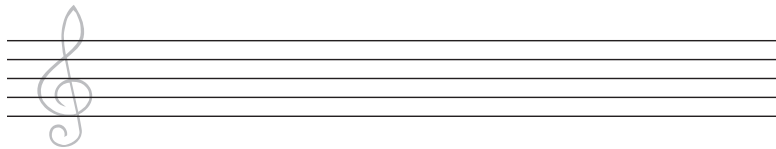


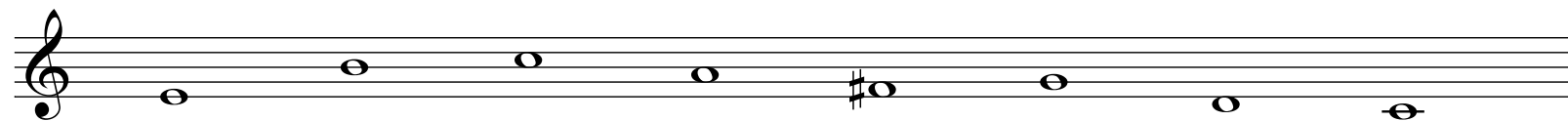


Monkey puzzles 1

1 Trace over these clefs then copy some more:

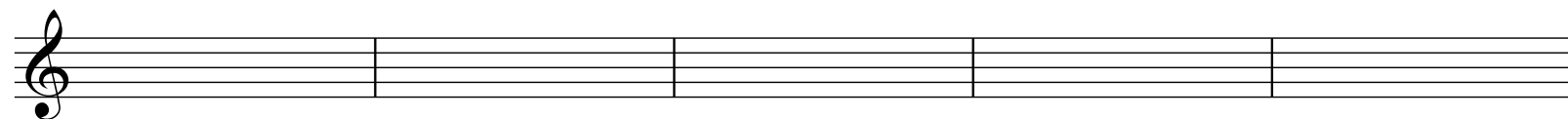


2 Name these notes:





3 Write these notes on the staff:



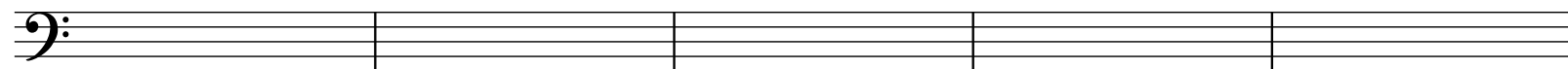
minim G

quaver B

semibreve F#

crotchet D

dotted minim A



crotchet D

semibreve G

quaver C

minim B

dotted minim F#



4 How many beats are there in each of these rests?



5 Write the key signature of G major:



6 How many crotchets are there in a dotted minim? _____

How many minims are there in a semibreve? _____

How many quavers are there in a crotchet? _____

How many crotchets are there in a semibreve? _____

- = 1/2 beat = quaver (eighth note)
- = 1 beat = crotchet (quarter note)
- = 2 beats = minim (half note)
- = 3 beats = dotted minim (dotted half note)
- = 4 beats = semibreve (whole note)

7 Add the barlines to these two tunes:

