

GUITAR THEORY I

CONTENTS

Music Notation	2
Rhythm Notation and Time Signatures	3
The Notes on the First String	4
The Notes on the Second String	5
Tied Notes	6
The Notes on the Third String	7
The Dotted Half Note	8
New Time Signature: 3/4	8
Repeat Signs	9
The Notes on the Fourth String	10
Eighth Notes	11
Another Repeat	12
Sharp Signs	13
The C, G and G7 Chords	14
The D and D7 Chords	15
The Blues	16
The Notes on the Fifth String	17
The C, A Minor and D Minor Chords	18
Power Chords: A5 and D5	19
First and Second Endings	20
The Notes on the Sixth String	21
New Power Chord: E5	22
Palm Mute/Accents	23
The Full G, G7 and E Minor Chords	24
F# on the Sixth String	25
ABA Song Form	26
Chord Progression Review	27
Rests	28
Power Chords: E6, A6 and D6	29
The Boogie Progression	30
Guitar Chord Chart	31
Guitar Fingerboard Chart	32

Photography: Roberto Santos



Alfred Music
P.O. Box 10003
Van Nuys, CA 91410-0003
alfred.com

Copyright © MCMXCIV, MMIII, MMVII by Alfred Music
All Rights Reserved

ISBN-10: 0-89898-730-X
ISBN-13: 978-0-89898-730-0

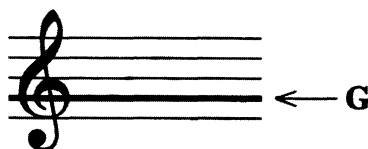
Music Notation

Music is written on a five line staff. Between each line there is a space.

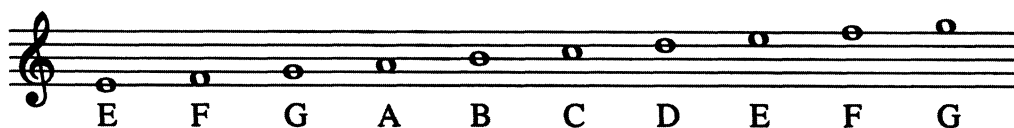
Number the lines and spaces:

line # ____	→	_____	
line # ____	→		space # ____
line # ____	→	_____	space # ____
line # ____	→		space # ____
line # <u>1</u>	→	_____	space # <u>1</u>

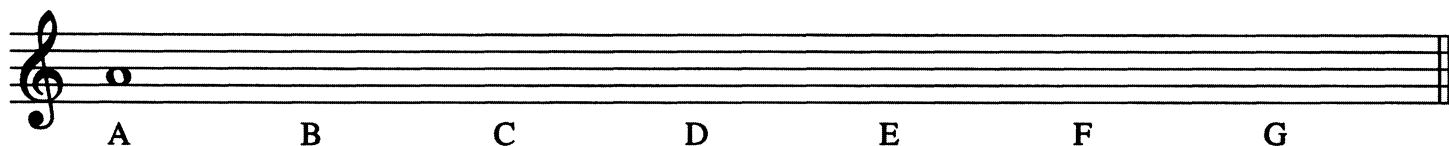
At the beginning of each staff there is a clef. The treble clef encircles the second line which is the note G. Therefore, it is sometimes called the G clef:



Notes are named after the first seven letters of the alphabet (A through G):



Draw the notes of the musical alphabet:

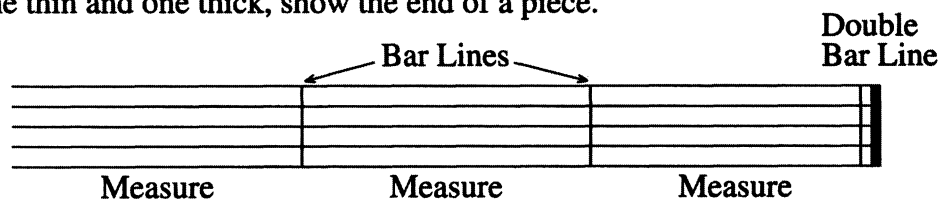


Music is divided into equal parts called **measures**.

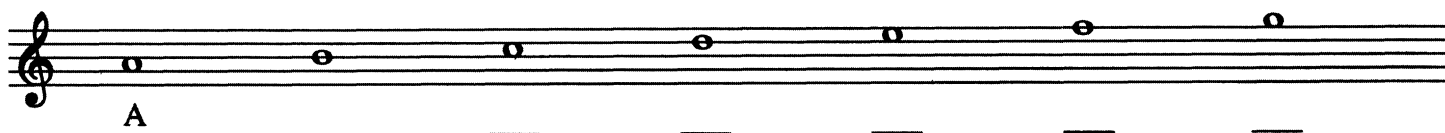
Bar lines indicate the beginning and end of measures.

The distance between two bar lines is called a measure.

Double bar lines, one thin and one thick, show the end of a piece.



1. Divide the staff into seven measures.
2. Name the notes.
3. End the staff with a double bar line.



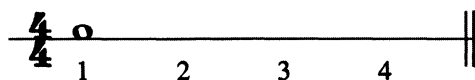
Use after page 6 of *Belwin's 21st Century Guitar Method 1*.

Rhythm Notation and Time Signatures

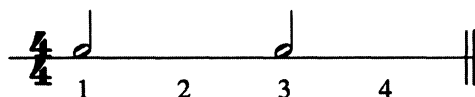
At the beginning of every song is a **time signature**. 4/4 is the most common time signature:

4 Four Counts To A Measure
4 A Quarter Note Receives One Count

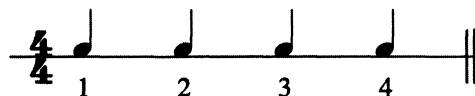
In $\frac{4}{4}$ time a whole note receives four beats:



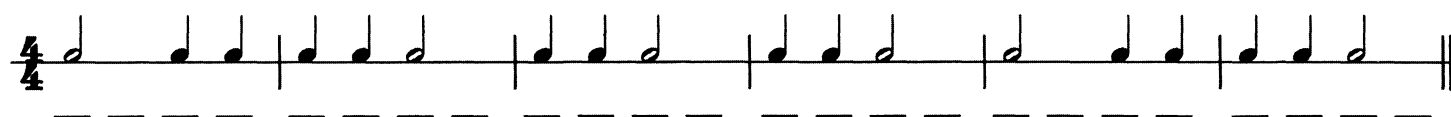
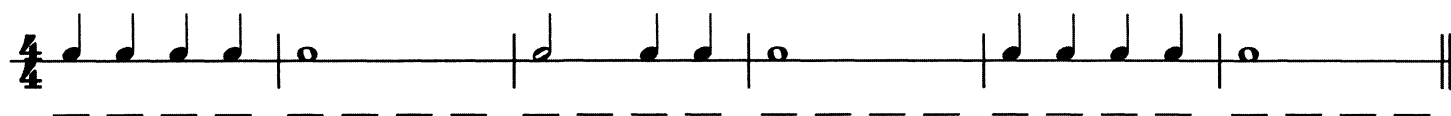
A half note receives two beats:



A quarter note receives one beat:



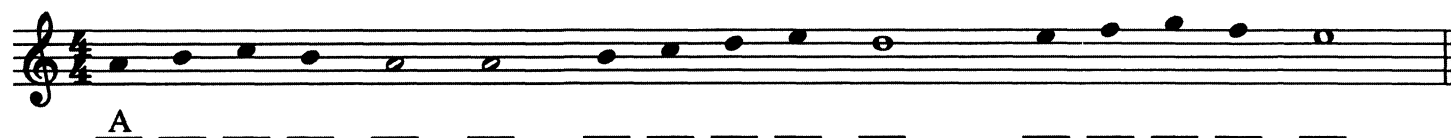
In the following three exercises, fill in the beats under the notes. Remember, there are four beats in each measure.



Add bar lines in the appropriate places (every four beats). End with a double bar.



Add bar lines (every four beats) then name the notes.



Use after page 7 of *Belwin's 21st Century Guitar Method 1*.

The Notes on the First String

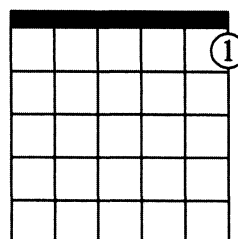
Name the notes indicated on the treble staff:







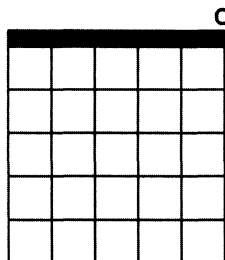
This frame indicates a note played with the _____ finger at the _____ fret of the _____ string. Its note name is _____. Play the note and say its name.

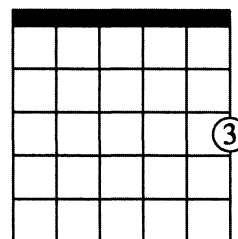


This tablature indication shows that the _____ string is to be played at the _____ fret. It will sound the note _____. Play the note and say its name.

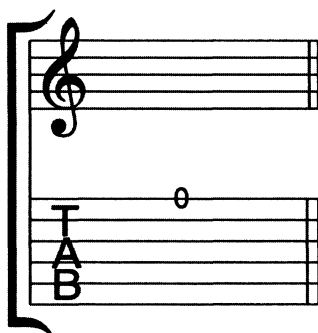


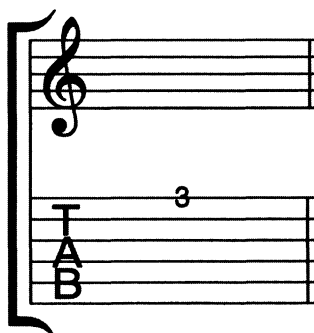
Name the notes indicated in the guitar frames:

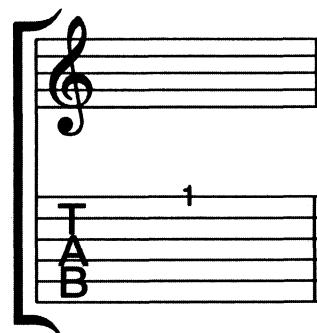




Draw the notes indicated in the tablature on the treble staves:







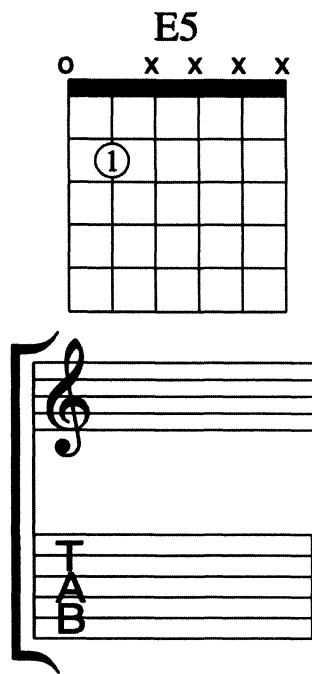
Name the notes and play them.

Use after page 8 of *Belwin's 21st Century Guitar Method 1*.

New Power Chord: E5

The E5 power chord is illustrated on the chord frame diagram.

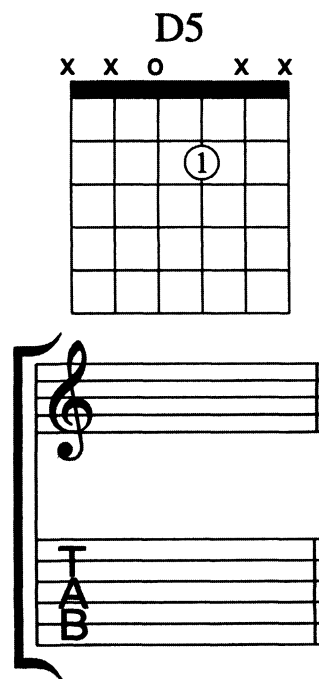
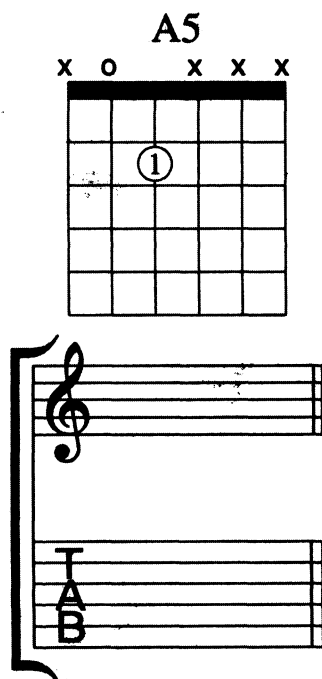
1. Draw the notes indicated on the staff.
2. Notate the chord in the tablature.
3. Name the chord.
4. Play the chord.



Power Chord Review

The A5 and D5 power chords are illustrated on the chord frame diagrams.

1. Draw the notes on the staff.
2. Notate the chord in the tablature.
3. Name the chord.
4. Play the chord.



Use after page 38 of *Belwin's 21st Century Guitar Method 1*.