


WHAT'S THE DIFFERENCE?

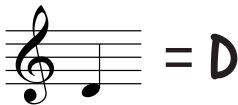
$\frac{3}{4}$ $\frac{4}{4}$

A cartoon illustration of a young boy with dark hair, rosy cheeks, and a wide smile, wearing a black suit jacket over a white shirt. He is positioned in the bottom left corner of the page.

Clap a one-bar rhythm
in each time signature.

$\frac{3}{4}$ = 3 beats in a bar,
 $\frac{4}{4}$ = 4 beats in a bar.

TRUE OR FALSE?



Play this note *f*.



True.
f means loud.

**NAME
THIS!**



Make up a
piece starting
on this note.